

# MILLER® FALCON SERIES SELF-RETRACTING LIFELINES

## OPERATION AND MAINTENANCE MANUAL

### WARNING:

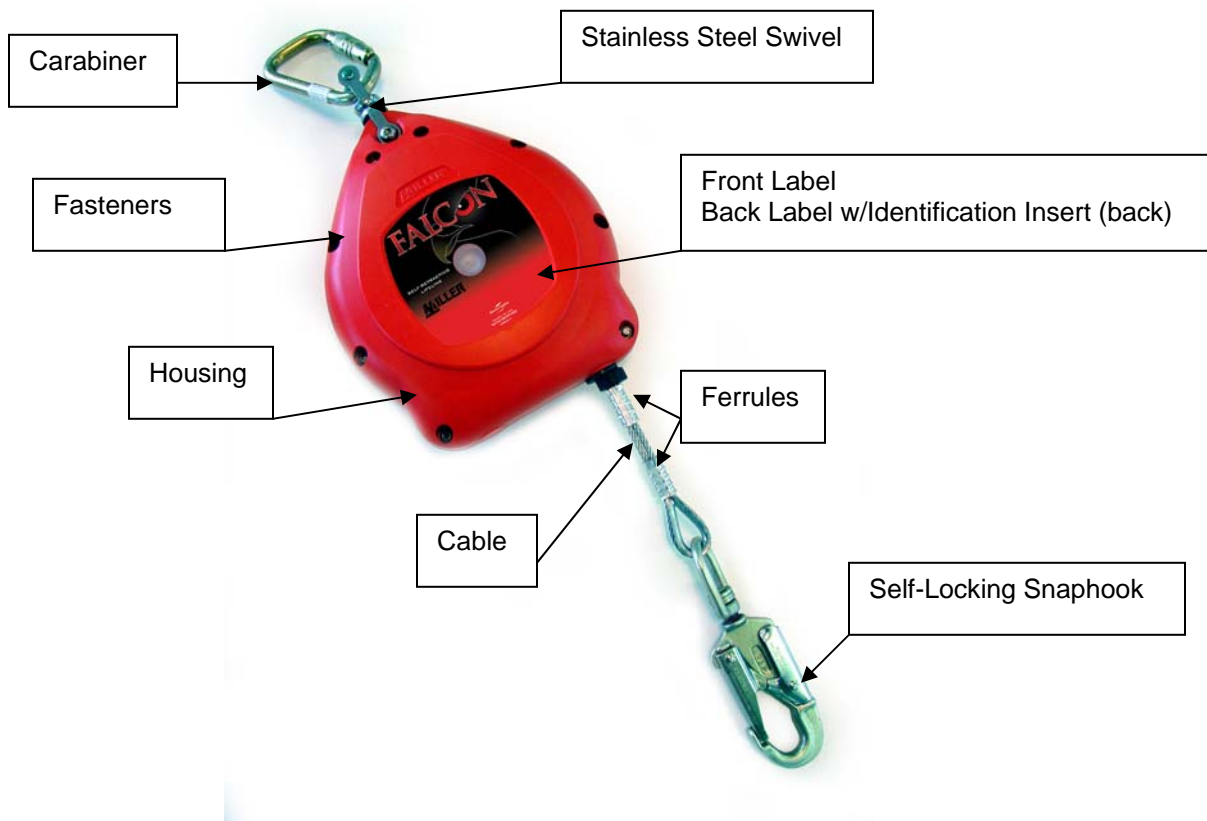
**ALL PERSONS USING THIS EQUIPMENT MUST READ AND UNDERSTAND ALL INSTRUCTIONS. FAILURE TO DO SO MAY RESULT IN SERIOUS INJURY OR DEATH.**

### FALCON RETRACTABLE LIFELINES

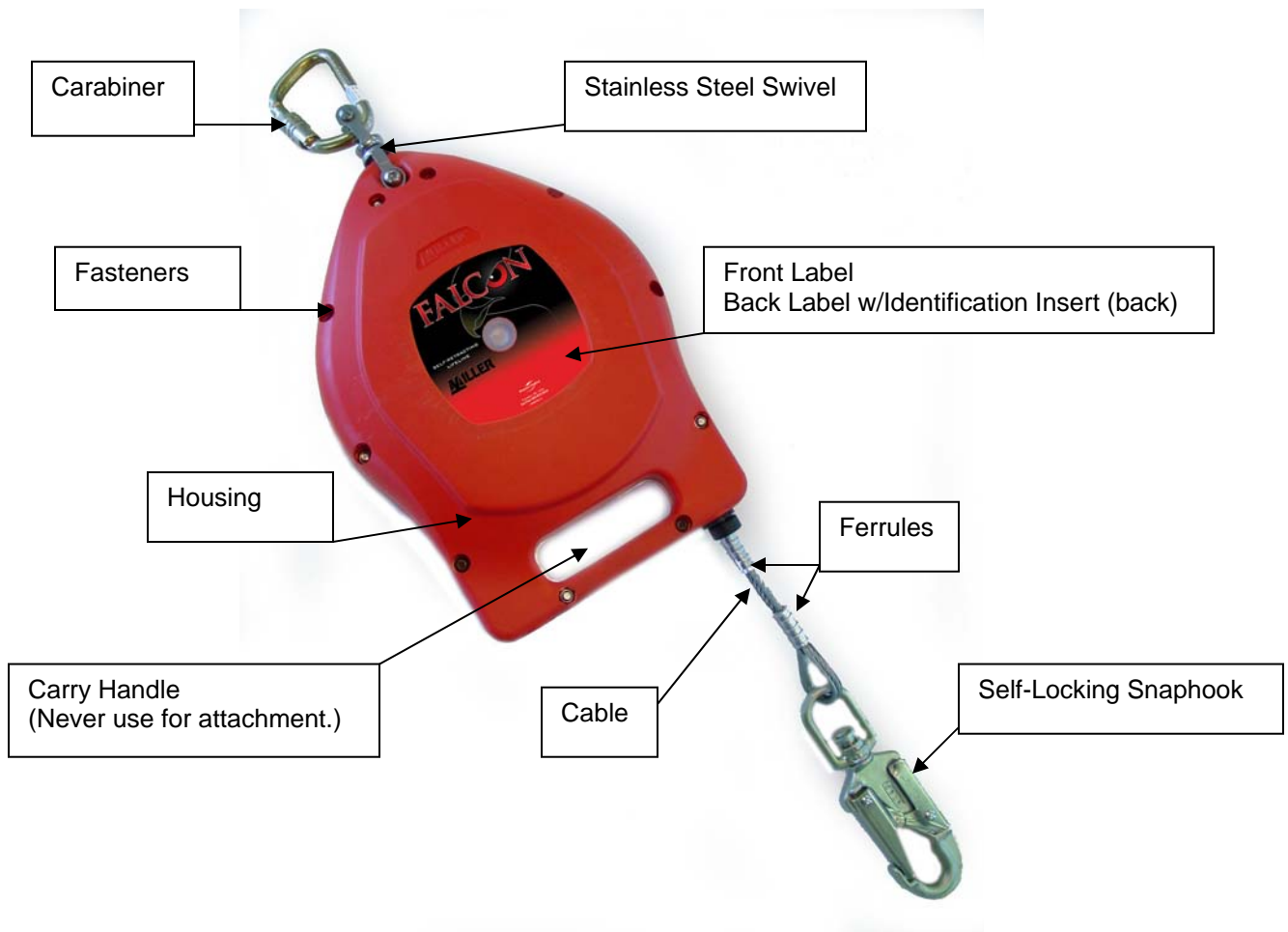
The Miller® Falcon Series Retractable Lifelines are self-contained retractable lifelines designed to be used by personnel in applications where fall protection in combination with unrestricted worker mobility is needed.

**Proper use of fall arrest systems can save lives and reduce the potential of serious injuries from a fall. The user must be aware that forces experienced during the arrest of a fall or prolonged suspension may cause bodily injury. Consult a physician if there is any question about the user's ability to use this product. Pregnant women and minors must not use this product.**

## Falcon Series Models MP20 & MP30



## Falcon Series Models MP50 & MP65



### I. REQUIREMENTS

#### A. WARNINGS AND LIMITATIONS

Proper precautions should always be taken to remove any obstructions, debris and other material from the work area that could cause injuries or interfere with the operation of the unit. Caution should also be taken to insure that all equipment will be clear of all other recognized hazards and that proper precautions have been taken to address all safety issues in the work area.

*Note: Users should be familiar with pertinent regulations governing this equipment. All individuals who use this product must be correctly instructed on how to use the system, and must read and understand the following instructions before using the unit.*

- For use by one person only. The design working load is 310 pounds (140.6 kg) — **DO NOT EXCEED THIS WEIGHT.**
- Only trained personnel should use this device.
- Do not use the unit if the lifeline doesn't retract.
- Do not use the unit if the lifeline brakes do not engage. Refer to inspection procedures for more details.
- Do not use the unit if any part of the system appears to be damaged.
- Never use the Carry Handle (MP50 & 65) as an attachment point.
- Do not use the unit if it has been subject to fall arresting forces. Return the unit to Miller Fall Protection or an authorized service center.
- Do not use the unit if the load impact indicator has been activated.

- Do not attempt to service this device; if it does not operate satisfactorily or requires repairs, return the unit to Miller Fall Protection or an authorized service center for repairs.
- Do not lubricate this device.
- The lifeline must be kept clean.
- The equipment should be installed overhead and used in such a manner as to reduce the potential for a pendulum fall.
- Allow adequate fall clearance below the work surface when using this device.
- Never work above the device.
- Never use the device as a restraint or positioning device.
- Never allow the lifeline to become slack or to pass under or entwine around the user's arms, legs, or any other obstacle or person.
- Do not allow cable, rope or webbing lifelines to come in contact with anything that will damage the lifeline including but not limited to sharp, abrasive, rough or high temperature surfaces, welding, heat sources, electrical hazards, or moving machinery.
- Use in highly corrosive or caustic environment dictates a more frequent inspection and servicing program to ensure the integrity of the unit is maintained. Contact Miller Fall Protection in cases of doubt.
- Employers must provide for prompt rescue in the event of a fall.
- Do not allow lifeline in any application to bend or be subjected to fall arresting forces over structural members or edges.
- Failure to follow instructions could cause serious injury or death.
- *Note: All Miller Falcon models can be coupled with a 928LS Shock-Absorber for users that weigh between 311 and 400 lbs. (141 and 181 kg.) The 928LS must be mounted between the back D-ring of the user's harness and the snaphook of the Falcon.*

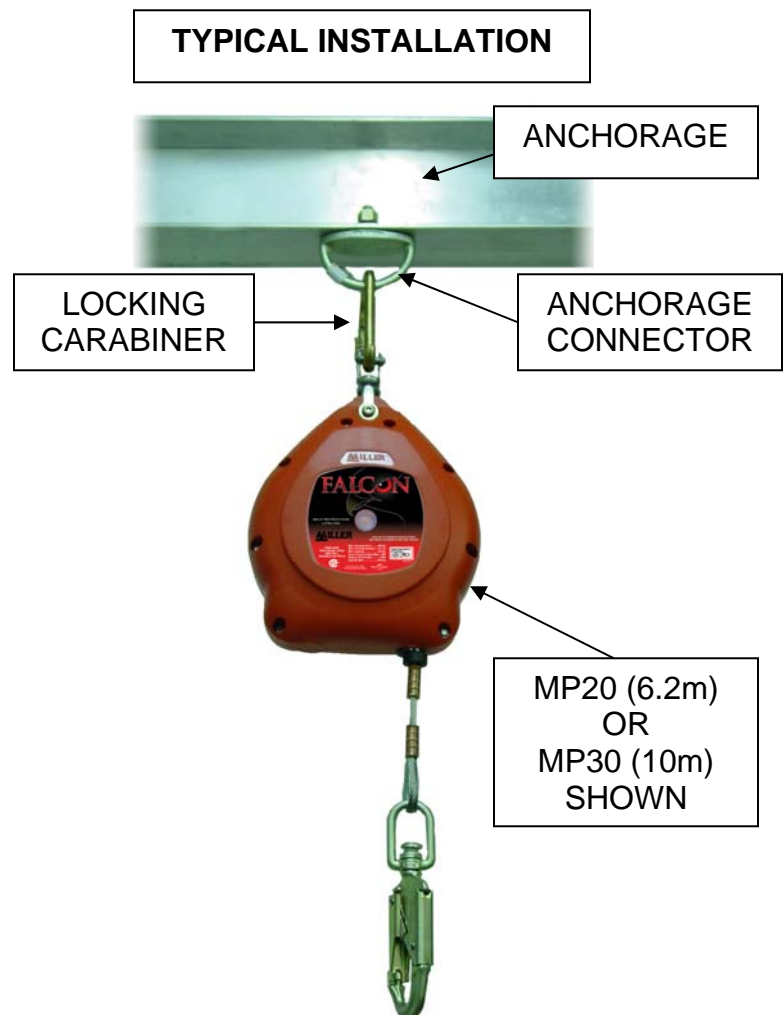
## B. SYSTEM COMPATIBILITY

Miller retractable lifelines are designed for use with Miller approved components. Substitution or replacement with non-approved components will endanger the compatibility within the system and may affect the reliability and safety of the total system. It is recommended that the user wear a Miller full-body harness to distribute the fall arresting forces over the body and to keep an unconscious or injured worker in an upright position.

## II. INSTALLATION

The Falcon series retractable lifelines must be mounted to an overhead anchor by the attachment swivel using a locking carabiner or another Miller Fall Protection approved mounting device. The anchorage fixtures must be capable of supporting a 5,000 lb. (22kN) tensile load or meet OSHA 1926.502 requirements for a safety factor of two. Review all warnings and instructions when selecting a mounting location.

The Falcon series retractable lifelines must be inspected and tested satisfactorily before each use as described in section III. Operation & Inspection. Before the user is subject to a fall hazard, connect the snap hook of the unit onto the back D-ring of the user's harness.



### III. OPERATION & INSPECTION

#### A. GENERAL INSPECTION

•Before use, inspect device for loose fasteners, bent, cracked, distorted, worn, malfunctioning, or damaged parts.

#### B. GENERAL OPERATION

**WARNING: The following operation checkpoints and inspections must be done prior to each use:**

**1. Anchorage Connection:** Make sure the carabiner is properly seated and in the locked position between the attachment swivel on the unit and the anchor point or make certain the unit is properly installed in the Miller mounting device. The anchorage connector and anchorage point must be capable of supporting 5,000 lbs. (22kN) or meet OSHA 1926.502 requirements for a safety factor of two.

**2. Lifeline Retraction:** With the device in the mounted position, test the lifeline retraction and tension by pulling out several feet of the lifeline and allow it to retract back into the unit. Always maintain a light tension on the lifeline as it retracts. The lifeline should pull out freely and retract all the way back into the unit.

a. If the lifeline does not pull out smoothly or sticks when retracting, pull all of the lifeline out of the housing and allow it to retract slowly under tension.

b. The lifeline should be checked regularly for signs of damage. Inspect for cuts, burns, corrosion, kinks, frays, or worn areas.

c. Do not pull the lifeline out of the housing or let it retract while the unit is laying flat. Always inspect and operate the unit in a mounted position.

**3. Braking Mechanism:** The braking mechanism can be tested by grasping the lifeline above the load indicator and applying a sharp steady pull downward which will engage the brakes. There should be no slippage of the lifeline while the brakes are engaged. Once tension is released, the brakes will disengage and the unit will return to the retractable mode.

**4. Snap Hook:** Check the snap hook to be sure that it operates freely, locks, and the swivel operates smoothly. Inspect the snap hook for any signs of damage to the keepers and any bent, cracked, or distorted components.

**5. Snap Hook Load Indicator:** A load indicator is located in the swivel of the snap hook. The swivel eye will elongate and expose a red area when subjected to fall arresting forces as shown.

**UNITS THAT DO NOT PASS THIS INSPECTION OR HAVE BEEN SUBJECTED TO FALL ARRESTING FORCES MUST BE REMOVED FROM SERVICE.**



#### IV. TRAINING

It is the responsibility of the user to assure that they read, understand, and follow all instructions and are trained in the care and use of this device. Training should be repeated periodically and any time there is a change of components within the system. Training must be conducted without exposing the trainee to a fall hazard.

#### V. MAINTENANCE

##### A. SERVICING

Servicing must only be carried out by a Miller Fall Protection approved service technician trained in the repair and service of Miller Fall Protection Falcon Series fall arrest lifeline systems/devices. A record log of all servicing and inspection dates for this device must be maintained by the company safety officer.

**This device must be returned to Miller Fall Protection or an approved service center whenever subjected to fall arresting forces for physical inspection and recertification.** Only original Miller replacement parts are approved for use in this device. Contact your Miller distributor or call Miller Fall Protection's Customer Service Department at 1-800-873-5242 for a return goods authorization number. **(The Following Note Applies Only To CSA Approved Products)** Note: CSA Z259.2.2 Requires Type 2 and Type 3 devices to be returned to the manufacturer or an approved service agent no more than 2 years after the date of manufacture for inspection and maintenance and annually thereafter.

##### B. CLEANING

Periodically clean the exterior of the device and wipe the lifeline using a damp cloth and mild detergent. Towel dry.

##### C. STORAGE

Store in a clean, dry location when not in use. The lifeline should be fully retracted into the unit when not in use.

#### FRONT I.D. LABEL (FIG. A)

##### FALCON SELF-RETRACTING LIFELINE

**WARNING: FAILURE TO OBSERVE INSTRUCTIONS MAY RESULT IN SERIOUS OR FATAL INJURY**

##### COMPLIANCE:

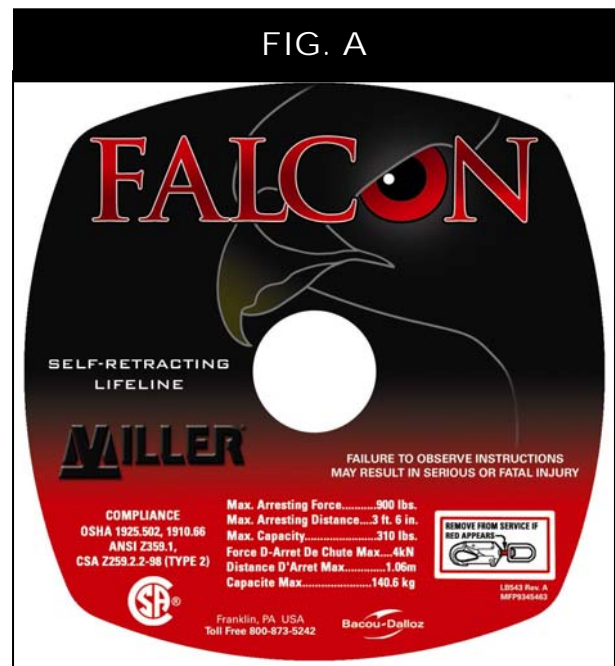
OSHA 1926.502, OSHA 1910.66, ANSI A10.14, CSA Z259.2.2-98 (TYPE 2), ANSI Z359.1

**MAX ARRESTING FORCE 900 LBS. (4 kN)**

**MAX ARREST DISTANCE 3' - 6" (1.06 m)**

**MAX CAPACITY 310 LBS. (140.6 kg)**

**LOAD-INDICATING SNAPHOOK WARNING:  
REMOVE FROM SERVICE IF RED APPEARS**





BACK WARNING LABEL (FIG. B)

**INSTALLATION**

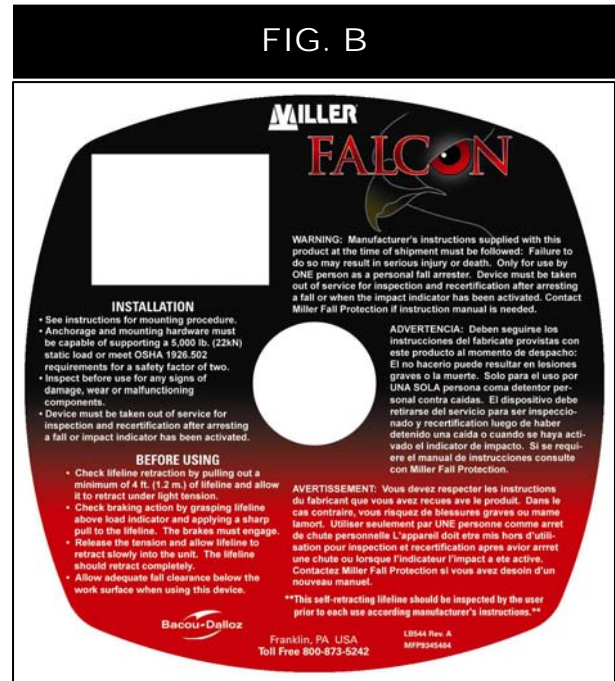
- SEE INSTRUCTIONS FOR MOUNTING PROCEDURE.
- ANCHORAGE AND MOUNTING HARDWARE MUST BE CAPABLE OF SUPPORTING A 5,000 LB. (22kN) STATIC LOAD OR MEET OSHA 1926.502 REQUIREMENTS FOR A SAFETY FACTOR OF TWO.
- INSPECT BEFORE USE FOR ANY SIGNS OF DAMAGE, WEAR OR MALFUNCTIONING COMPONENTS.
- DEVICE MUST BE TAKEN OUT OF SERVICE FOR INSPECTION AND RECERTIFICATION AFTER ARRESTING A FALL OR LOAD INDICATOR HAS BEEN ACTIVATED.

**BEFORE USING**

- CHECK LIFELINE RETRACTION BY PULLING OUT A MINIMUM OF 4 FT. (1.2M.) OF LIFELINE AND ALLOW IT TO RETRACT UNDER LIGHT TENSION.
- CHECK BRAKING ACTION BY GRASPING LIFELINE ABOVE LOAD INDICATOR AND APPLYING A SHARP PULL TO THE LIFELINE. THE BRAKES MUST ENGAGE.
- RELEASE THE TENSION AND ALLOW LIFELINE TO RETRACT SLOWLY INTO THE UNIT. THE LIFELINE SHOULD RETRACT COMPLETELY.
- ALLOW ADEQUATE FALL CLEARANCE BELOW THE WORK SURFACE WHEN USING THIS DEVICE.

**WARNING: MANUFACTURER’S INSTRUCTIONS SUPPLIED WITH THIS PRODUCT AT THE TIME OF SHIPMENT MUST BE FOLLOWED: FAILURE TO DO SO MAY RESULT IN SERIOUS INJURY OR DEATH. ONLY FOR USE BY ONE PERSON AS A PERSONAL FALL ARRESTER. DEVICE MUST BE TAKEN OUT OF SERVICE FOR INSPECTION AND RECERTIFICATION**

**\*\*THIS SELF-RETRACTING LIFELINE SHOULD BE INSPECTED BY THE USER PRIOR TO EACH USE ACCORDING TO MANUFACTURER’S INSTRUCTIONS.\*\***



IDENTIFICATION LABEL (FIG. C)

**MODEL/LENGTH**

- MP20G/20FT (6.2m) · 3/16” (4.8mm) GALVANIZED STEEL CABLE
- MP20SS/20FT (6.2m) · 3/16” (4.8mm) STAINLESS STEEL CABLE
- MP30G/30FT (10m) · 3/16” (4.8mm) GALVANIZED STEEL CABLE
- MP30SS/30FT (10m) · 3/16” (4.8mm) STAINLESS STEEL CABLE
- MP50G/50FT (15m) · 3/16” (4.8mm) GALVANIZED STEEL CABLE
- MP50SS/50FT (15m) · 3/16” (4.8mm) STAINLESS STEEL CABLE
- MP65G/65FT (20m) · 3/16” (4.8mm) GALVANIZED STEEL CABLE
- MP65SS/65FT (20m) · 3/16” (4.8mm) STAINLESS STEEL CABLE

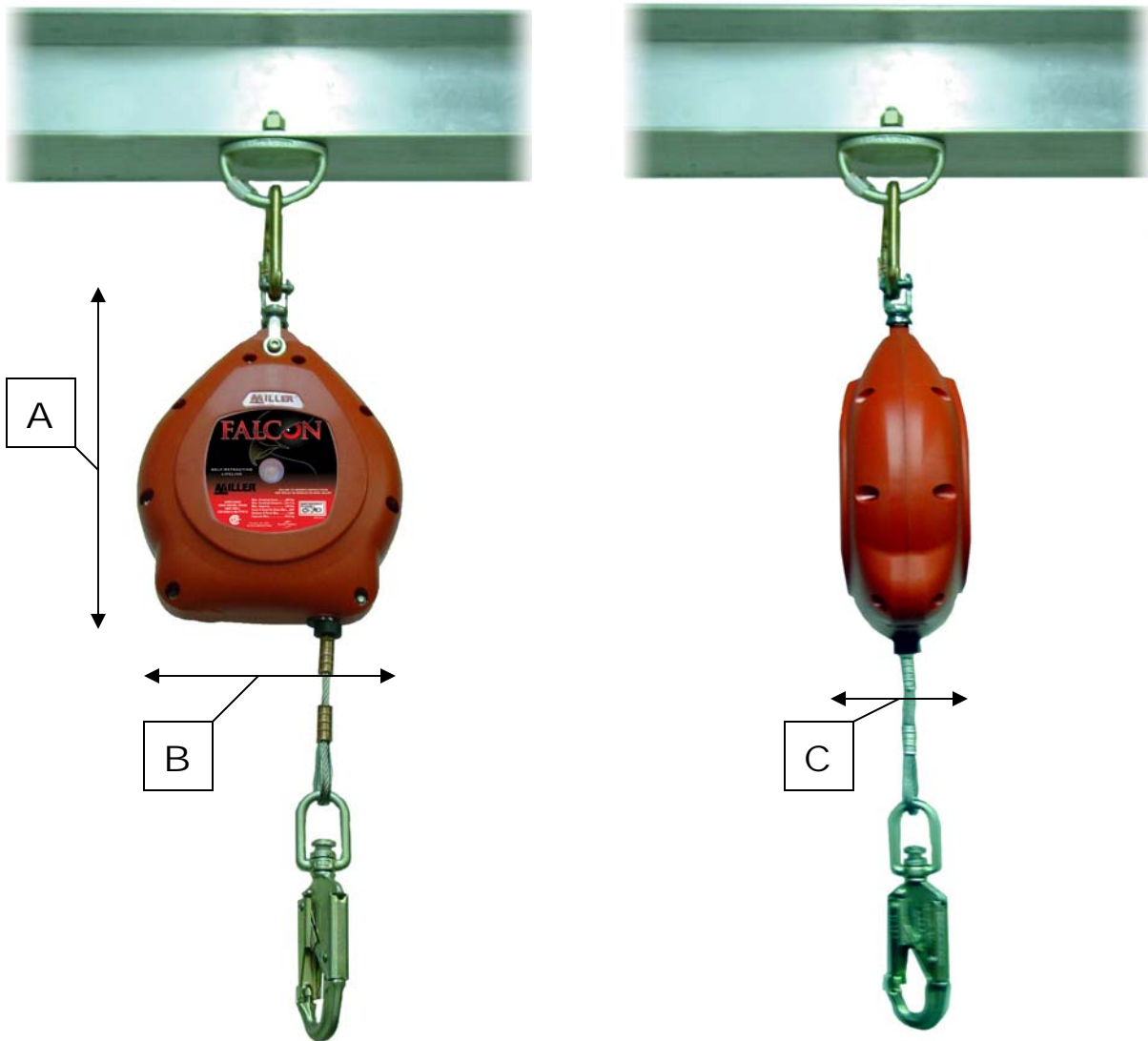
DATE OF MANUFACTURE: MMYYY

SERIAL NO.: XXXXX



## MILLER FALCON - MP SERIES SELF-RETRACTING LIFELINES MODEL SPECS

Model	LifeLine Material	Length	Weight (lbs.)	A (inches)	B (inches)	C (inches)
MP20G	3/16" (4.8mm) galvanized cable	20' (6.2m)	8.9 (4.0kg)	12.1 (30.8cm)	8.4 (21.3cm)	4.0 (10.2cm)
MP20SS	3/16" (4.8mm) stainless steel cable	20' (6.2m)	8.9 (4.0kg)	12.1 (30.8cm)	8.4 (21.3cm)	4.0 (10.2cm)
MP30G	3/16" (4.8mm) galvanized cable	30' (10m)	10.8 (4.9kg)	12.1 (30.8cm)	8.4 (21.3cm)	4.0 (10.2cm)
MP30SS	3/16" (4.8mm) stainless steel cable	30' (10m)	10.8 (4.9kg)	12.1 (30.8cm)	8.4 (21.3cm)	4.0 (10.2cm)
MP50G	3/16" (4.8mm) galvanized cable	50' (15m)	14.8 (6.7kg)	15.5 (39.4cm)	9.8 (24.8cm)	4.0 (10.2cm)
MP50SS	3/16" (4.8mm) stainless steel cable	50' (15m)	14.8 (6.7kg)	15.5 (39.4cm)	9.8 (24.8cm)	4.0 (10.2cm)
MP65G	3/16" (4.8mm) galvanized cable	65' (20m)	17.2 (7.8kg)	15.5 (39.4cm)	9.8 (24.8cm)	4.0 (10.2cm)
MP65SS	3/16" (4.8mm) stainless steel cable	65' (20m)	17.2 (7.8kg)	15.5 (39.4cm)	9.8 (24.8cm)	4.0 (10.2cm)



## **MATERIAL SPECIFICATIONS**

**Housing:** High Impact Nylon  
**Fasteners:** Stainless Steel  
**Top Swivel:** Stainless Steel  
**Ferrules:** Aluminum or Copper  
**Cable:** Galvanized or Stainless Steel  
**Snaphook:** Drop Forged Steel  
**Brake Pawls:** Bronze  
**Drum:** Aluminum  
**Frame Plates:** Aluminum or Stainless Steel  
**Power Spring:** Stainless Steel  
**Mainshaft:** Stainless Steel

## **TECHNICAL SPECIFICATIONS**

**Max Working Load:** 310 lbs -140.62 kg  
**Ultimate Strength:** 3600 lbs. -16.01kN  
**Lifeline Tension:** 3 to 4 lbs. -13.3/17.8 N  
**Free Fall Distance:** 24" Max. - 609.6 mm  
**Deceleration Distance:** 42" Max – 1.06m  
**Arresting Force:** 900 lbs. (approx.) – 4kN  
**Strength Test:** 300 lbs. 4' free fall  
(1.33 kN @ 1.22m free fall)

I227  
REV. B  
MFP9720108

Sperian Protection  
43 Garden Boulevard  
Dingley VIC 3172  
1300 139 166  
FAX: 1300 362 491  
[www.millerfallprotection.com.au](http://www.millerfallprotection.com.au)





# Miller Falcon 16ft and 20ft SRL

MILLER FALL PROTECTION

Model: MP16P/16FT or MP20P/20FT

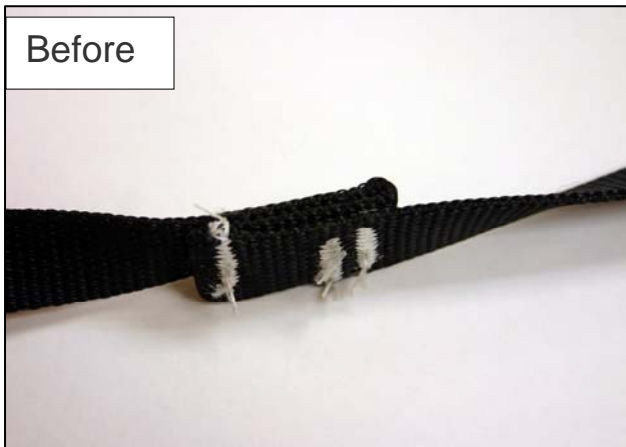
## New Product Information/Instruction Manual Insert:

We would like to thank you for your purchase of Miller Fall Protection equipment. Please carefully read this supplemental instruction and specification sheet. It contains special instructions, inspections and maintenance procedures that are unique to the Falcon 16ft/20ft product line, and should be referenced in addition to the Miller Falcon instruction booklet also included with this product. Should you have any questions about your Miller Fall Protection product, please contact the Miller Technical Service at 1300 139 166

## Load Indicator

### Activation Inspection

In addition to the standard inspection procedures, the load indicator should be inspected prior to each use to ensure the unit has not seen fall arresting forces.



## Warning Labels



# Miller Falcon 16ft and 20ft SRL

MILLER FALL PROTECTION

Model: MP16P/16FT or MP20P/20FT

## Description

Miller Falcon 16ft (4.9m) and 20ft. (6.1m) web lifelines with stainless steel swivel, aluminum snaphook and carabiner.

Nearly indestructible, high impact-resistant thermoplastic housing withstands the harsh rigors of the toughest applications. Pound for pound the strongest, most durable line of self-retracting lifelines on the market.

## Materials

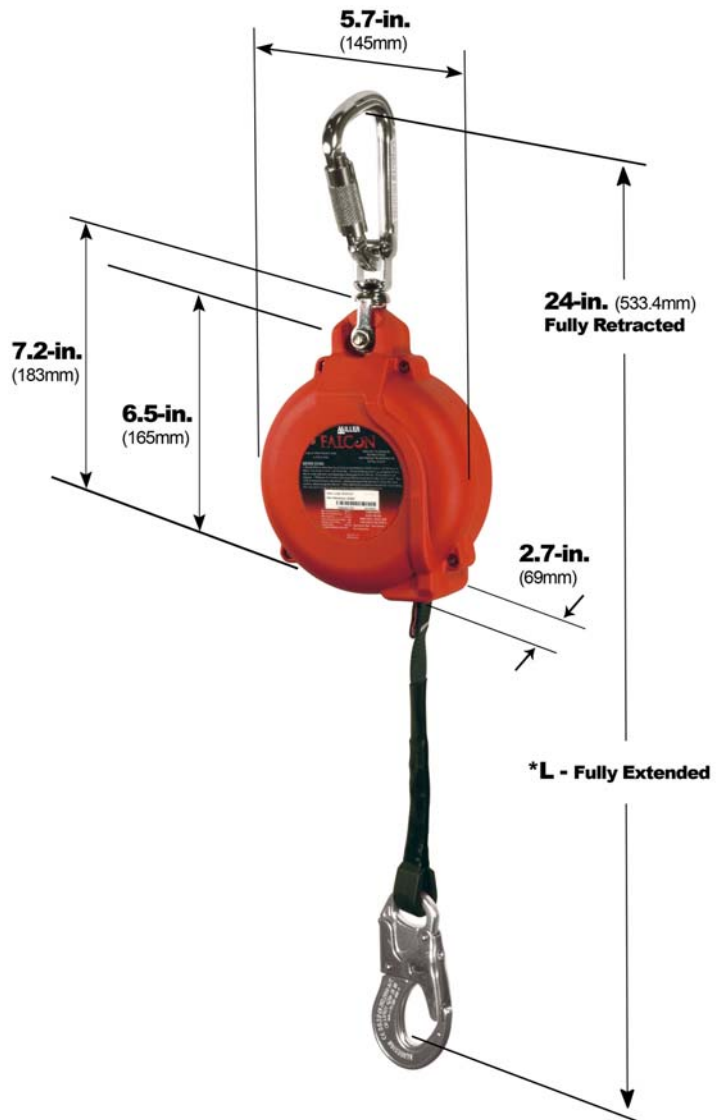
- Housing:** High-strength thermoplastic polypropylene
- Hub:** Aluminum and high-strength composite
- Braking Mechanism:** High-strength steel, yellow zinc chromate plating
- Lifeline:** Core: Technora® (aramid fiber)  
Outer cover: Chemically-treated polyester for increased abrasion resistance
- Snaphook:** Aluminum
- Carabiner:** Aluminum

## Technical

- Maximum Working Load:** 400lbs (181kg)
- Working Length Capacity:** 16ft (4.9m) or 20ft (6.1m)
- Maximum Arresting Force:** <900lbs/f (4kN) for up to 310lbs. (140kg) Working Load  
<1800lbs/f (8kN) for up to 400lbs. (181kg) Working Load

## Certification

Meets all applicable OSHA, ANSI, CSA and CE requirements.



MODEL NUMBER	*L - LENGTH	WEIGHT WITHOUT CARABINER	WEIGHT WITH CARABINER
MP16P/16FT	16' (4.9m)	2.90lbs.(1.31kg)	3.32lbs (1.50kg)
MP20P/20FT	20' (6.1m)	2.98lbs.(1.35kg)	3.40lbs (1.54kg)



[www.millerfallprotection.com.au](http://www.millerfallprotection.com.au)

**WARNING!** THIS DOCUMENT PROVIDES AN OVERVIEW OF FALL PROTECTION PRODUCTS AVAILABLE FROM MILLER FALL PROTECTION AND CARE HAS BEEN TAKEN TO ASSURE THE ACCURACY OF THE DATA. IT DOES NOT PROVIDE IMPORTANT PRODUCT WARNINGS AND INSTRUCTIONS. MILLER FALL PROTECTION RECOMMENDS ALL USERS OF FALL PROTECTION EQUIPMENT UNDERGO THOROUGH TRAINING, AND THAT ALL WARNINGS AND INSTRUCTIONS PROVIDED WITH THE PRODUCTS BE THOROUGHLY READ AND UNDERSTOOD PRIOR TO EACH USE. FAILURE TO READ AND FOLLOW ALL PRODUCT WARNINGS AND INSTRUCTIONS COULD RESULT IN SERIOUS INJURY OR DEATH.